

ZEALOUS

An innovative fungicide
derived from plant extracts



- Principal active ingredient is GERANIOL
- For foliar application to plants susceptible to mildew diseases
- NO MRL
- 0 PHI & 0 REI

GROPRO
Turf and Ornamental
ZEALOUS
BROAD SPECTRUM LIQUID FUNGICIDE CONCENTRATE

ACTIVE INGREDIENT:	MANUFACTURED BY:
Geraniol (CAS # 106-24-1) 16.70%	GROPRO
OTHER INGREDIENTS*: 83.30%	12600 West Frontage Road, Burnsville MN 55337
TOTAL: 100.00%	Phone: 1-833-476-7761 www.groproag.com

*Water (CAS# 7732-18-5),
Isopropyl alcohol (CAS# 67-63-0)

KEEP OUT OF REACH OF CHILDREN
CAUTION
See Back Panel for Precautionary Statements

Intended for use by commercial applicators.
Use in greenhouses, ornamentals, cannabis and on turf related to golf courses,
farms, sport fields, residential, institutional, municipal, commercial, and other
grass areas.

How can we help? 1-833-476-7761
PRINTED ON LABEL

NET CONTENTS: 1 Gal (3.785 L)

Natural extract for healing humans and protecting plants

Geraniol is a commercially important terpene alcohol occurring in the essential oils of several aromatic plants. Geraniol is known to exhibit insecticidal and repellent properties and used as a natural pest control agent exhibiting low toxicity. Geraniol has been suggested to represent a new class of chemoprevention agents for cancer. Other biological activities such as antimicrobial, anti-oxidant, anti-inflammatory and some vascular effects have also been investigated.

**GROPRO owns patented
technology of geraniol extraction.**



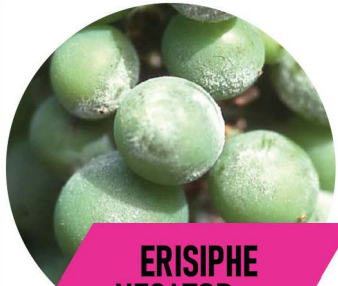
GERANIOL

USED AGAINST

- *Podosphaera fusca* in cucumbers and melons
 - *Podosphaera leucothricha* in apples and pears
 - *Podosphaera aphanis* and strawberries, roses, and raspberries
 - *Erisiphe necator* in grapes
 - *Oidium lysopersicum* in tomatoes
- Plus more



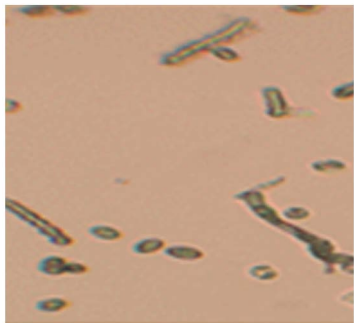
**PODOSPHAERA
LEUCOTHRICHA**



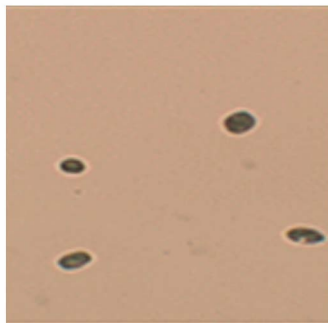
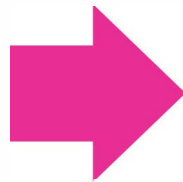
**ERISIPHE
NECATOR**

Mode Of Action

- Retards spore germination and growth of germ tubes
- Destroys the cells of pathogens
- Has both preventive and curative action



Before



After

